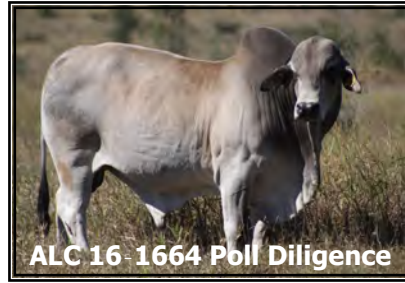
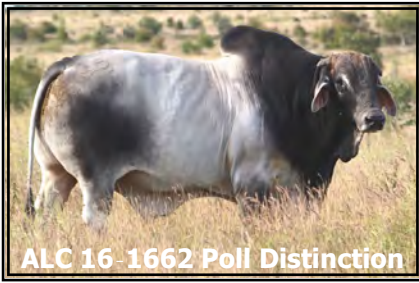
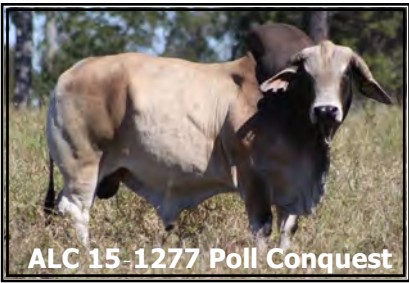


# All Sires List 2023



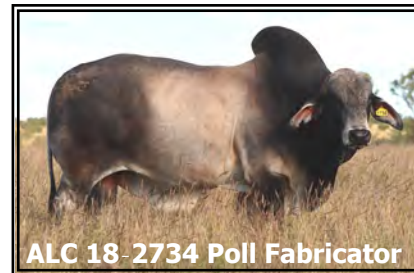
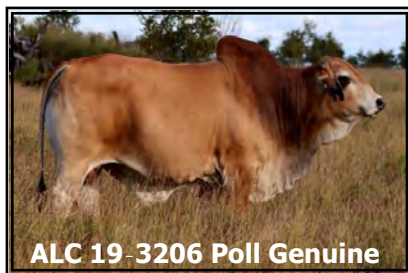
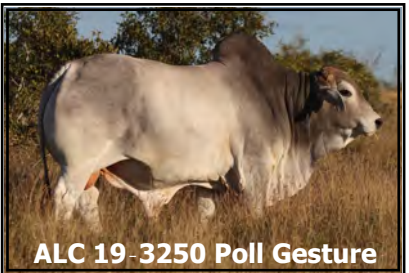
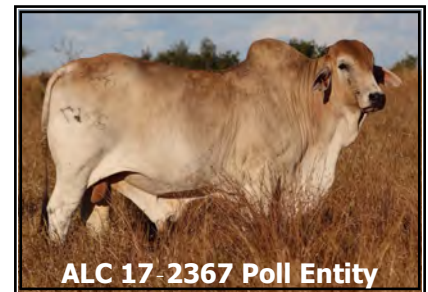
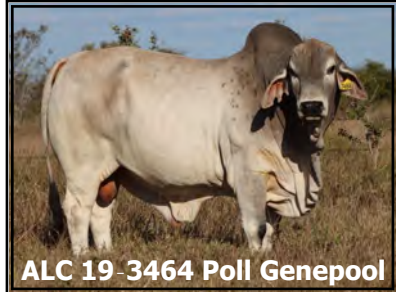
**Economically Proven—Predictable, Fertile, Grass-Raised Genetics**





**Sires of the S'22 ALC Bulls for sale at 2023 ALC Bull Sale**

**REAL PROGRESS - MAKING IT HAPPEN**  
Sire selection represents the major directional force available to the beef producer for creating change in his herd.





### ALC All-Sires

Sire #	NAME	Puberty		Col	Hrn	April 2023 GROUP EBV'S					Cent Live		SIRE	DAM	Age 1st calf	# calv	Calv. Int.	DTC EBV	GSIRE	GDAM	Age 1st calf	# calv	Calv. Int.
		age	kg			200	400	600	SS	DTC	Prod	Ex											
ALC 14-0757	Beau	15	386	GY	D	24	36	50	4.1	-14.6	89	89	06-4900	08-5859	2.1	9	408	-15.7	02-0558	03-1607	3.3	9	354
ALC 14-1037	Brian	13	332	DGY	D	26	40	52	3.8	-14.7	87	81	08-6019	08-5968	2.9	8	375	-17.0	04-2372	04-2625	2.8	8	382
ALC 15-1277	Poll Conquest	13	313	RD	P	20	36	63	3.7	-15.2	103	91	12-0019	12-0059	3.0	3	410	-7.4	05-2913	03-1574	2.8	8	393
ALC 15-1297	Calibrator	13	363	GY	D	26	45	57	2.2	-16.8	96	89	307/9	12-0132	3.1	2	399	-14.0	09-6647	09-7281	2.8	4	389
ALC 15-1317	Capacitor	12	301	RD	D	25	36	57	4.5	-13.1	86	74	11-9116	03-2074	3.0	13	366	-8.5	97-7316	99-8328	3.1	5	383
ALC 15-1335	Criterion	13	298	RD	D	30	38	62	3.2	-16.0	97	80	11-9116	09-7149	2.9	6	365	-14.6	05-3167	03-1587	3.0	5	389
ALC 15-1349	Contender	14	307	LRD	D	16	26	34	2.5	-13.8	51	68	09-6647	09-6658	3.0	8	367	-19.0	06-3639	06-3871	2.9	3	425
ALC 16-1662	Poll Distinction	14	308	GY	P	15	23	33	4.2	-18.6	65	83	11-9055	09-6834	3.0	8	368	-24.3	06-3670	06-4335	2.7	1	
ALC 16-1664	Poll Diligence	14	331	GY	P	24	34	50	3.7	-14.4	82	76	11-9055	12-0305	2.9	9	367	-16.3	08-6019	07-4583	3.0	10	367
ALC 16-1773	Devine XL	14	291	GY	D	27	37	58	3.2	-20.1	100	98	09-6647	13-0459	2.0	8	360	-25.4	06-4269	03-1982	2.8	13	365
ALC 17-2124	Enhancer	12	362	RD	D	32	49	63	4.3	-15.5	103	88	14-1037	14-1090	2.8	4	366	-17.0	07-5005	06-3704	3.1	12	360
ALC 17-2157	Elaborate	11	284	GY	D	22	29	54	2.9	-11.8	84	81	14-0757	14-0919	3.0	4	371	-13.0	06-3751	06-3890	3.2	7	363
ALC 17-2161	Poll Encore	11	300	GY	PP	18	27	40	3.9	-16.0	68	79	14-0887	14-1171	2.7	6	367	-12.2	06-3751	03-1785	3.1	9	373
ALC 17-2181	Emphatic	12	322	GY	D	14	22	40	2.9	-21.1	78	91	11-9055	09-6635	3.0	8	368	-26.3	06-3799	06-4235	2.8	1	
ALC 17-2211	Poll Elite	12	319	CR	S	12	18	33	3.9	-15.3	57	75	11-9055	07-4542	3.1	10	369	-17.3	03-1580	02-B0590	3.0	3	367
ALC 17-2307	Embrace	11	309	BN	D	20	25	40	4.1	-15.2	70	74	14-1037	14-1105	2.9	5	362	-13.3	11-8686	12-0201	2.1	3	391
ALC 17-2330	Eminent	11	275	GY	D	18	33	38	5.3	-20.4	83	93	14-1037	14-1089	2.9	2	330	-16.2	11-8686	12-0346	1.9	9	361
ALC 17-2367	Poll Entity	10	300	LR	P	23	36	60	3.2	-17.5	105	96	11-9055	09-7598	2.7	13	331	-23.9	01-9711	05-3512	3.0	4	354
ALC 18-2655	Fabuloso	13	327	CR	D	29	47	62	3.2	-12.8	89	71	15-1297	14-0938	2.1	7	418	-14.0	11-9130	11-8843	3.0	9	364
ALC 18-2860	Fernando	13	343	RD	D	22	44	66	2.8	-21.3	117	108	09-7472	13-0459	2.0	8	360	-25.4	06-4269	03-1982	2.8	13	365
ALC 18-2914	Poll Force	13	287	RD	P	27	39	52	2.2	-14.9	77	74	13-0478	14-1090	2.8	4	366	-17.0	07-5005	06-3704	3.1	12	360
ALC 18-3083	Poll Foresight	11	280	RD	P	13	15	28	4.4	-14.4	50	71	14-0757	14-1164	2.9	4	356	-12.9	06-3751	07-4497	3.0	8	379
ALC 19-3206	Poll Genuine	12	300	RD	S	18	29	52	6.3	-20.9	96	98	16-1662	15-1370	3.0	6	359	-16.4	09-6647	06-4892	2.8	7	368
ALC 19-3236	Gamechanger	12	277	CR	D	27	40	57	4.5	-21.2	100	94	16-1775	13-0459	2.0	8	360	-25.4	06-4269	03-1982	2.8	13	365
ALC 19-3250	Poll Gesture	14	322	CR	P	28	45	70	4.2	-16.7	116	94	15-1277	09-6979	2.9	9	366	-22.0	04-2372	05-3176	2.8	7	387
ALC 19-3319	Poll Glory	14	283	GY	P	25	40	68	2.9	-18.5	122	107	15-1277	15-1586	2.7	5	366	-19.8	10-8573	09-7200	2.9	4	396
ALC 19-3418	Gold Genius (ET)	16	283	RD	D	28	40	57	3.6	-17.9	95	86	127	09-6834	3.0	8	368	-24.3	06-3670	06-4335	2.7	1	

### ALC All-Sires

Sire #	NAME	Puberty		Col	Hrn	April 2023 GROUP EBV'S					Cent Live		SIRE	DAM	Age 1st calf	# calv	Calv. Int.	DTC EBV	GSIRE	GDAM	Age 1st calf	# calv	Calv. Int.
		age	kg			200	400	600	SS	DTC	Prod	Ex											
ALC 19-3464	Poll Genepool	13	292	LR	PP	29	49	76	2.7	-9.1	101	71	15-1277	15-1214	3.0	5	371	-7.5	10-7694	05-3290	2.9	12	362
ALC 19-3516	Graduate	12	327	RD	D	24	40	49	4.9	-15.5	82	80	14-1037	11-9644	2.7	10	364	-10.4	07-5258	06-3904	3.0	3	406
ALC 19-3573	Poll Guardian	13	301	RD	S	22	36	58	4.4	-14.9	93	84	15-1277	15-1333	2.9	4	363	-12.1	09-6647	09-6584	3.0	9	365
ALC 19-3609	Grandmaster	13	351	RD	D	33	56	77	4.3	-10.2	108	76	16-1754	16-2037	2.7	2	435	-15.0	12-0229	13-0438	2.1	7	372
ALC 19-3696	Graviton	11	303	GY	D	26	44	66	5.2	-12.5	103	82	14-1037	14-0873	2.1	3	557	-2.4	11-9055	11-9164	2.9	1	
ALC 19-3820	Poll Gusto	11	301	LR	P	18	25	38	4.8	-15.3	65	74	14-1037	14-1068	2.8	3	393	-11.1	10-7694	09-7055	2.9	4	371
ALC 20-3917	Poll Harmony	13	328	GY	PP	18	36	49	3.6	-20.8	93	99	17-2371	16-1931	2.8	5	363	-25.9	13-0383	14-1036	2.0	3	352
ALC 20-3972	Hallmark	13	344	CR	D	24	36	50	3.9	-26.0	108	112	16-1662	09-6821	3.0	11	363	-27.2	06-3799	06-4892	2.8	7	368
ALC 20-3975	Highlight	11	337	GY	D	28	43	62	3.6	-15.5	102	84	14-1037	14-0839	3.0	5	376	-16.9	06-3751	04-2764	2.8	14	364
ALC 20-3981	Heritage	11	334	RD	D	23	32	54	3.9	-14.7	85	77	14-1037	15-1370	3.0	6	359	-16.4	09-6647	06-4892	2.8	7	368
ALC 20-3986	Honcho	12	325	CR	D	25	37	58	2.9	-15.3	95	83	16-1664	15-1393	3.0	6	362	-15.8	11-8686	09-6747	3.0	5	370
ALC 20-3987	Highclass	11	330	RD	D	34	50	75	2.8	-11.9	110	82	14-1037	15-1455	2.9	6	363	-16.8	307/9	13-0687	1.9	9	358
ALC 20-3988	Poll Honour	12	337	LR	P	26	38	51	4.2	-22.2	99	101	16-1662	15-1359	2.9	4	389	-19.5	11-9116	09-6529	3.0	4	379
ALC 20-4035	Hilton	11	304	RD	D	23	34	52	3.9	-18.7	91	86	16-1664	15-1442	2.8	6	378	-23.3	09-6960	10-8367	2.8	9	369
ALC 20-4068	Poll Hombre	13	314	LR	P	18	29	49	3.4	-17.5	86	90	14-0832	14-1064	2.0	7	413	-18.5	07-5005	05-3029	2.9	7	375
ALC 20-4128	Poll Heaven	13	337	GY	P	26	46	60	2.7	-23.6	120	111	14-0832	16-2051	2.8	5	361	-26.9	11-8930	12-0141	2.1	10	362
ALC 20-4204	Houdini	12	332	GY	D	24	39	52	4.8	-21.1	107	106	16-1664	13-0447	3.1	8	364	-18.4	06-3751	08-5859	2.1	9	408
ALC 20-4331	Hickory	11	338	RD	D	39	54	79	5.2	-13.6	118	82	15-1335	14-1033	2.1	8	358	-13.4	05-3066	10-8002	3.0	4	369
ALC 20-4376	Highcaliber	10	305	GY	D	29	40	65	4.2	-17.2	115	104	17-2157	17-2242	2.0	5	361	-19.4	13-0629	12-0094	2.0	7	371
ALC 20-4512	Poll Harvest	11	297	GY	P	21	32	51	3.3	-14.5	84	83	17-2307	18-2591	2.2	1		-12.9	15-1277	15-1358	2.9	5	380
ALC 21-4527	Poll Icon	12	346	RD	S	19	35	40	4.5	-23.7	87	101	18-2860	18-3009	2.8	3	381	-20.4	14-1037	15-1239	3.2	6	353
ALC 21-4562	Poll Impact	11	362	RD	PP	28	47	72	5.4	-15.7	119	98	15-1277	14-1056	2.9	6	360	-9.1	11-9130	12-0050	2.1	2	736
ALC 21-4588	Poll Intent	12	328	GY	S	23	32	58	3.2	-17.6	99	93	18-2953	18-2644	3.0	2	374	-22.1	15-1220	15-1512	2.8	5	363
ALC 21-4599	Poll Insight	12	362	GY	P	24	46	67	3.5	-17.0	113	99	15-1277	17-2291	1.9	5	363	-17.5	13-0629	09-6498	2.9	9	366
ALC 21-4608	Impeccable	13	381	RD	D	37	45	65	3.5	-10.2	89	62	15-1335	18-2997	2.8	1		-14.5	14-0757	12-0204	2.9	5	363
ALC 21-4626	Infusion	14	397	DGY	P	22	37	47	3.1	-15.7	76	78	17-2161	13-0403	2.0	9	364	-24.9	04-2351	02-0954	2.9	12	376
ALC 21-4641	Innovator	13	343	LR	D	14	23	28	4.0	-18.6	55	76	15-1335	18-3061	2.7	3	405	-19.4	12-0229	14-0839	3.0	5	376

ALC All-Sires

Sire #	NAME	Puberty		Col	Hrn	April 2023 GROUP EBV'S					Cent Live		SIRE	DAM	Age 1st calf	# calv	Calv. Int.	DTC EBV	GSIRE	GDAM	Age 1st calf	# calv	Calv. Int.
		age	kg			200	400	600	SS	DTC	Prod	Ex											
ALC 21-4668	Poll Inspire	13	383	GY	P	27	43	64	2.1	-17.4	110	101	17-2371	08-5624	2.2	13	362	-22.6	05-2980	05-3028	2.9	5	375
ALC 21-4751	Impression	12	367	RD	D	21	36	59	5.7	-23.2	112	107	17-2181	14-0980	3.0	5	358	-18.5	11-9116	12-0108	2.1	2	411
ALC 21-4848	Poll Incentive	13	315	GY	S	12	21	38	2.8	-17.4	67	86	17-2211	17-2145	2.0	5	360	-20.3	14-1037	14-0935	2.9	7	367
ALC 21-4870	Poll Influence	10	300	CR	P	21	32	46	4.9	-18.8	86	88	18-3047	19-3447	2.0	1		-15.5	16-1662	15-1192	2.0	7	363
ALC 21-4919	Poll Idol	12	343	LR	S	28	41	62	3.6	-18.3	111	98	17-2367	15-1532	2.0	7	355	-12.1	11-9130	07-4497	3.0	8	379
ALC 21-4923	Illustrious	12	354	RD	D	21	30	55	3.5	-19.0	101	100	17-2211	16-1656	2.1	6	358	-17.8	10-7785	12-0216	3.0	3	353
ALC 21-4955	Poll Interpreter	12	324	GY	P	19	30	38	3.5	-14.4	60	69	17-2161	07-4387	3.0	13	368	-19.5	03-1639	99-8444	3.1	6	353
ALC 22-5186		10	325	CR		26	45	51	2.9	-18.8	88	86	19-3236	19-3590	2.0	3	350	-19.1	14-1037	13-0467	2.1	9	358
ALC 22-5215		9	337	RD		28	42	63	3.7	-18.1	109	94	17-2367	17-2368	2.9	4	357	-17.8	11-9116	11-9562	2.7	6	381
ALC 22-5288		9	295	CR		21	35	52	4.7	-17.7	92	90	19-3696	19-3677	2.0	3	356	-21.9	14-0832	14-0835	3.0	7	368
ALC 22-5317		10	352	GY	S	32	52	71	3.8	-11.7	103	76	19-3696	19-3830	2.8	2	356	-11.6	14-0887	13-0593	3.0	5	375
ALC 22-5379		10	332	GY	P	29	47	66	5.5	-21.3	124	108	16-1664	15-1460	2.8	5	365	-22.9	09-6960	10-8302	2.9	6	365
ALC 22-5383		13	344	RD	S	19	33	51	3.2	-21.2	101	100	15-1277	16-2051	2.8	5	361	-26.9	11-8930	12-0141	2.1	10	362
ALC 22-5390		10	304	GY	S	18	31	47	3.2	-20.9	92	98	17-2367	17-2522	1.9	5	347	-21.9	13-0439	13-0657	2.8	8	370
ALC 22-5481		11	330	CR	S	26	42	68	4.4	-20.4	122	104	19-3250	19-3239	3.0	2	373	-23.9	16-1775	15-1561	2.8	6	358
ALC 22-5507		12	336	GY	PP	23	35	46	3.3	-16.7	80	81	19-3820	19-3433	3.0	2	356	-17.9	T32	09-7598	2.7	11	365
ALC 22-5523		11	341	CR	S	24	39	61	3.6	-18.5	106	97	19-3250	19-3507	2.9	2	368	-20.6	15-1349	15-1456	2.0	7	366
ALC 22-5555		12	384	CR	S	38	60	95	4.1	-12.8	142	94	19-3609	19-3293	3.0	2	378	-16.3	15-1277	15-1339	2.9	3	368
ALC 22-5671		10	316	RD	P	23	39	63	3.9	-18.3	109	99	17-2161	18-2628	2.2	4	347	-21.2	15-1277	15-1554	2.8	3	364
ALC 22-5764		12	360	CR		31	48	58	3.5	-12.5	83	68	9435	17-2386	2.0	4	483	-16.7	12-0229	11-9608	2.7	7	369
ALC 22-5765		12	360	GY	PP	21	34	47	3.7	-14.6	76	80	17-2161	18-2764	3.1	3	370	-13.2	14-0881	14-0919	3.0	4	371
ALC 22-5842		9	299	GY		21	32	52	5.9	-17.0	93	88	19-3696	19-3494	2.0	3	358	-17.9	16-1662	14-0979	3.0	4	374
ALC 22-5877		12	329	RD	PP	22	34	52	2.1	-13.0	82	78	16-1664	18-2658	2.2	4	345	-13.8	15-1277	15-1254	3.0	6	366
ALC 22-5881		10	295	RD	PP	22	32	46	3.6	-15.5	77	78	16-1664	18-2623	2.2	4	346	-15.7	15-1277	15-1581	2.7	3	392